

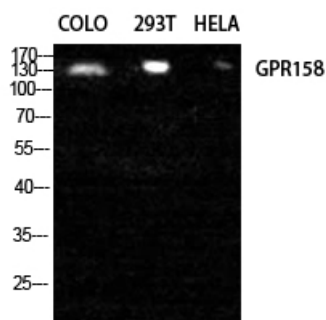


# GPR158 Polyclonal Antibody

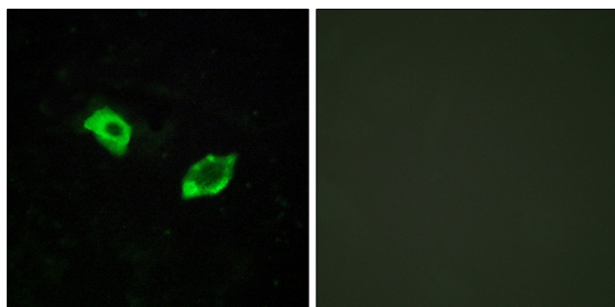
<b>Catalog No</b>	YP-Ab-13313
<b>Isotype</b>	IgG
<b>Reactivity</b>	Human;Mouse
<b>Applications</b>	WB;IHC;IF;ELISA
<b>Gene Name</b>	GPR158
<b>Protein Name</b>	Probable G-protein coupled receptor 158
<b>Immunogen</b>	The antiserum was produced against synthesized peptide derived from human GPR158. AA range:1-50
<b>Specificity</b>	GPR158 Polyclonal Antibody detects endogenous levels of GPR158 protein.
<b>Formulation</b>	Liquid in PBS containing 50% glycerol, 0.5% BSA and 0.02% sodium azide.
<b>Source</b>	Polyclonal, Rabbit,IgG
<b>Purification</b>	The antibody was affinity-purified from rabbit antiserum by affinity-chromatography using epitope-specific immunogen.
<b>Dilution</b>	Western Blot: 1/500 - 1/2000. Immunohistochemistry: 1/100 - 1/300. Immunofluorescence: 1/200 - 1/1000. ELISA: 1/5000. Not yet tested in other applications.
<b>Concentration</b>	1 mg/ml
<b>Purity</b>	≥90%
<b>Storage Stability</b>	-20°C/1 year
<b>Synonyms</b>	GPR158; KIAA1136; Probable G-protein coupled receptor 158
<b>Observed Band</b>	150kD
<b>Cell Pathway</b>	Cell membrane; Multi-pass membrane protein.
<b>Tissue Specificity</b>	Brain,
<b>Function</b>	function:Orphan receptor.,similarity:Belongs to the G-protein coupled receptor 3 family.,
<b>Background</b>	function:Orphan receptor.,similarity:Belongs to the G-protein coupled receptor 3 family.,
<b>matters needing attention</b>	Avoid repeated freezing and thawing!
<b>Usage suggestions</b>	This product can be used in immunological reaction related experiments. For more information, please consult technical personnel.



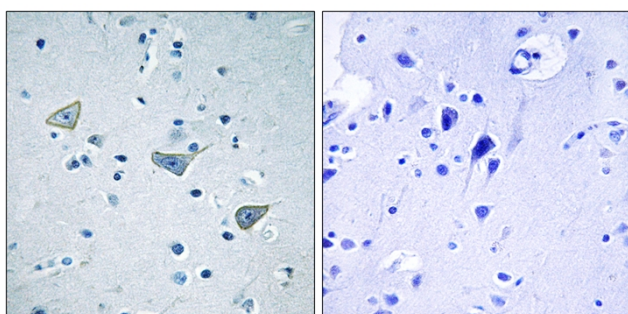
## Products Images



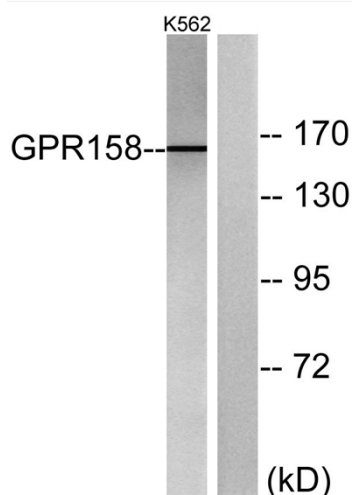
Western Blot analysis of COLO 293T HELA cells using GPR158 Polyclonal Antibody diluted at 1:2000



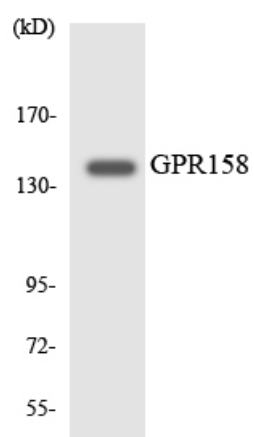
Immunofluorescence analysis of HUVEC cells, using GPR158 Antibody. The picture on the right is blocked with the synthesized peptide.



Immunohistochemistry analysis of paraffin-embedded human brain tissue, using GPR158 Antibody. The picture on the right is blocked with the synthesized peptide.



Western blot analysis of lysates from K562 cells, using GPR158 Antibody. The lane on the right is blocked with the synthesized peptide.



Western blot analysis of the lysates from HeLa cells using GPR158 antibody.